

## Quick Card

# SCU-1800 Sweep Control Unit Checking Options

This document provides instructions on how to check what options are installed on an SCU-1800.

### Prerequisite:

Please Review SCU-1800 Getting Started Guide

### System Requirements:

- SCU-1800
- 48V DC supply
- 10/100BASE-T Ethernet connection with static IP address

### Log In:

- Enter IP address in URL of a Web Browser
- Default User Name = scuadmin
- Default Password = scuadmin

### Check Options:

- Navigate to the **Options** display in the **Settings** menu. The follow options may be listed:
  - SCU-1800 Forward Sweep Option:
    - Allows Forward Sweep from 42 MHZ to 1218 with ONX630 and DSAM 6300
    - Replaces the SDA 5500
  - SCU-1800 Reverse Sweep Single User
    - Allows Single Return Sweep from 4 MHZ to 204 with ONX-630 and DSAM 6300
    - Replaces the SDA 5500
  - SCU-1800 Enable 16 Port Reverse Sweep
    - Allows Single Return Sweep from 4 MHZ to 204 with ONX-630 and DSAM 6300 on all 16 ports.
  - SCU-1800 Reverse Sweep Multiple User
    - Allows Up to 10 Return Sweep Users from 4 MHZ to 204 with ONX-630 and DSAM 6300 on all 16 ports
    - Replaces the SDA 5510

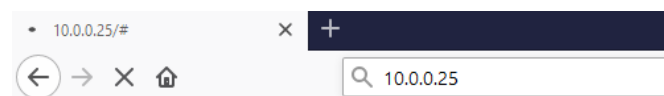


Figure 1: Enter IP Address in Web Browser

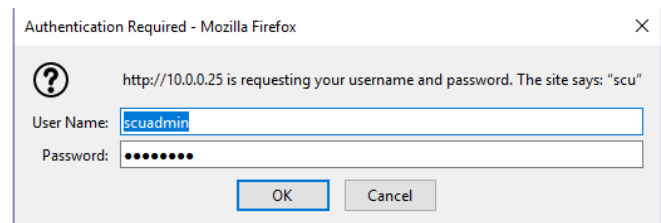


Figure 2: Enter User Name and Password

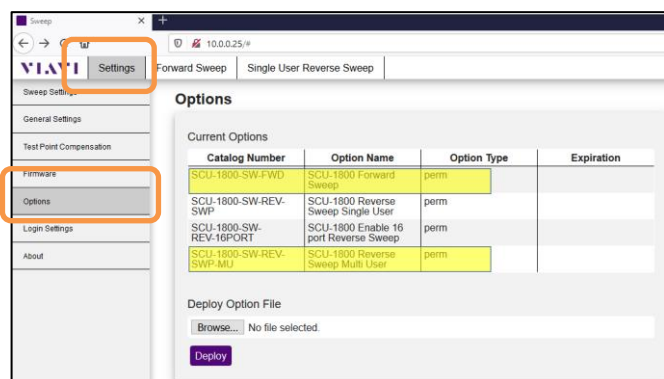


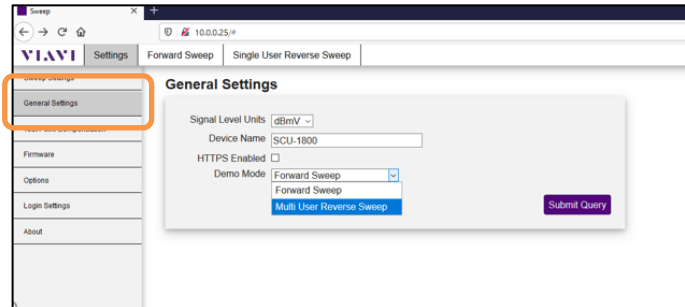
Figure 3: Options GUI

**Flex Option:**

- If the SCU-1800 has the following options:
  - SCU-1800 Forward Sweep Option
  - SCU-1800 Reverse Sweep Multiple User

navigate to the **General Settings** display in the **Settings** menu.

- Set **Demo Mode** to **Forward Sweep** to perform a single user return sweep like the SDA 5500.
- Set **Demo Mode** to **Multiple User Reverse Sweep** to perform a multi-user return sweep like the SDA 5510.



*Figure 4: General Settings*