

VIAVI

ONE LabPro

ONE-1600 2-port OSFP 1600G Test Module

The industry's first fully-integrated testing solution for pluggable 1600G Transceivers on 224G Electrical Lane Speed with insightful Physical Layer, FEC and MAC/IP, and Ethernet network performance testing

The VIAVI ONE LabPro™ ONE-1600 is for NEMs, IC designers and module vendors working on high-speed 1600G Ethernet projects.

The ONE-1600 2-port test module is a performance validation and debugging test system for R&D, system verification and production. It accelerates development projects by providing insights into lower layers including PHY, PCS, FEC stability and Ethernet performance.

Unlike other Test and Measurement products, the ONE LabPro ONE-1600, 2-port Test Module provides unique functionality to generate alarms and errors, stress FEC logic and power integrity.

- Ensures eco-system interoperability
- Enables reliable performance
- Accelerates product validation



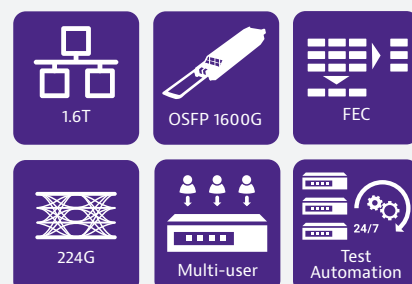
Figure 1. ONE-1600 2-port Module and ONE Controller C1

Features

- ONE-1600 Module 2 x OSFP 1600G in 1.5U
- ONE Controller C1 in 1U – scales up to 16 x ONE LabPro HSE-800 or ONE-1600 test modules
- 1600G Unframed BERT, 4 x 400GE, 2 x 800GE framed Ethernet
- Hardware Validation
- Transponder Control Environment
- FEC Stress Testing
- Test Automation

Applications

- IC development and validation test
- 1600G Transceiver testing and validation
- System Verification Testing (SVT)
- Manufacturing testing



Hardware Configuration

The VIAVI ONE LabPro ONE-1600 Test Module provides 2 x OSFP 1600G ports covering multi-rate 1600GE testing. The Test Module is connected and controlled through the ONE Controller C1. The Controller provides timing reference and can be augmented with the optional ultra-high accuracy GNSS Rb Clock.



Figure 2. ONE Controller C1 (top) and ONE-1600 OSFP 1600G 2-port Module (bottom)

Scalable Solution – Hardware and Licensing

Each ONE Controller C1 can orchestrate up to 16 x ONE LabPro Test Modules. ONE Controller C1 based licensing allows application initiated dynamic allocation of features to any connected test module and port.

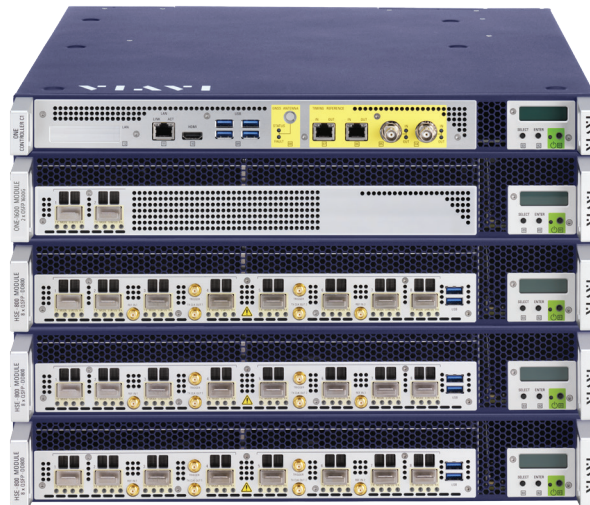


Figure 3. ONE Controller C1 can serve a mixed scenario of HSE-800 and ONE-1600 Test Modules.

Applications

The ONE LabPro ONE-1600 provides Framed Ethernet 2x800GE and 4x400GE and Unframed BERT testing. Unique Physical Layer Testing includes:

| Feature | Description |
|--------------------------|-----------------------------------------------------------------------------------------------------------------------------------------------------------------------------------------------------------------------------------------------------------------|
| Unframed BERT | Unframed BERT includes test patterns including PRBS31Q, PRBS13Q and inverted; Square Wave Q, SSPRQ |
| Hardware Validation | Hardware Validation is a toolkit including I ² C Dump, Transponder Debugging, Power Supply Settings, Frequency Variation Sequences |
| Advanced Error Analysis | Detailed analysis to fingerprint error nature and accelerate BER test times, quickly identify system photonic and DSP issues |
| Services Disruption Test | The Service Disruption Test measure the disruption time of the Ethernet signal that may be caused by overload situations, dropped frames, temporary routing faults or events that cause an automatic protection switching (APS) |
| BER Estimation | BER Estimation tests against a targeted BER with a required Confidence Level |
| Transceiver Stress Test | Test includes sequencing through different test patterns, Frequency Pull-in, Frequency Offset Variation and Frequency Offset Sequence in Unframed BERT and Ethernet modes. Dynamic Skew Variation Mode can be included in test sequence in Dynamic Skew option. |

Ordering Information

The ONE LabPro, ONE-1600 will be orderable soon. Contact your VIAVI Sales representative for details.

All statements in this document are preliminary and subject to change.

Hardware

| Part Number | Description |
|------------------------------------------------------------|--------------------------------------------------------|
| 411-004.03 | ONE-1600 OSFP 1600G 2-port Module |
| 490-001.01 | ONE Controller C1 |
| Hardware Factory Options for ONE Controller C1 | |
| 490-040.01 | Ultra high Accuracy GNSS Rb Clock |
| Required Configuration Choice for ONE Controller C1 | |
| 495-052.02 | Power cable - Y - BS1363 - UK - 230VAC - 13A |
| 495-053.02 | Power cable - Y - CEE7-7 - EU - 230VAC - 16A |
| 495-054.02 | Power cable - Y - GB15934-2008 - China - 220VAC - 16A |
| 495-055.02 | Power cable - Y - IS1293 - India - 230VAC - 16A |
| 495-057.02 | Power cable - Y - NEMA-L6-20P - US/CAD - 250VAC - 20A |
| 495-058.02 | Power cable - Y - SI32 - Israel - 230VAC - 16A |
| 495-052.01 | Power cable - BS1363 - UK - 230VAC - 13A |
| 495-053.01 | Power cable - CEE7-7 - EU - 230VAC - 16A |
| 495-054.01 | Power cable - GB15934-2008 - China - 220VAC - 16A |
| 495-055.01 | Power cable - IS1293 - India - 230VAC - 16A |
| 495-057.01 | Power cable - NEMA-5-15P - US/CAD/Japan - 120VAC - 15A |
| 495-058.01 | Power cable - SI32 - Israel - 230VAC - 16A |

Hardware continued

| Part Number | Description |
|---------------------------------------|------------------------------------------------|
| Optional Configuration Options | |
| 495-082.01 | Rackmount Kit 19 and 21 inch for Module 1.5U |
| 495.082.03 | Rackmount Kit 19 and 21 inch for Controller 1U |
| 495-084.01 | Controller and Module Assembly Clamp 2.5U |
| 495-081.01 | Ethernet Cable RJ45 CAT5E - 0.5m or 1.5 ft |
| 495-081.03 | Ethernet Cable RJ45 CAT5E - 2m or 6.5ft |
| 495-088.01 | ONE LabPro Travel Case |

Software Options

Application feature licensing is assigned to the ONE Controller C1 as Dynamic License with per port granularity. Licenses are automatically assigned to ports and modules based on the application scenario selected by the user. Licenses are automatically revoked upon test completion

Example: A 2 port license means the application is available on 2 ports concurrently.

| Part Number | Description | Included Functionality | Item # Per Port |
|-------------|------------------------------------------------------|---------------------------------------------|-----------------|
| 411-234.58 | 2x800GE - 2 port | 2x800GE - 224G SERDES | 411-234.59 |
| 411-234.59 | 2x800GE - 1 port | | |
| 411-244.58 | 4x400GE - 2 port | 4x400GE - 224G SERDES | 411-244.59 |
| 411-244.59 | 4x400GE - 1 port | | |
| 411-610.58 | Unframed BERT and Error Analysis - 2 port | Unframed BERT and Error Analysis | 411-610.59 |
| 411-610.59 | Unframed BERT and Error Analysis - 1 port | | |
| 411-614.58 | Transceiver Stress Test - 2 port | Transceiver Stress Test | |
| 411-614.59 | Transceiver Stress Test - 1 port | | |
| 411-616.58 | Coherent Transceiver Performance Monitoring - 2 port | Coherent Transceiver Performance Monitoring | 411-616.59 |
| 411-616.59 | Coherent Transceiver Performance Monitoring - 1 port | | |
| 411-618.58 | Transceiver Control Environment - 2 port | Transceiver Control Environment | 411-618.59 |
| 411-618.59 | Transceiver Control Environment - 1 port | | |
| 411-672.58 | Ethernet FEC Validation - 800GE - 2 port | FEC Validation 2x800GE | 411-672.59 |
| 411-672.59 | Ethernet FEC Validation - 800GE - 1 port | | |
| 411-675.58 | Ethernet FEC Validation - up to 400GE - 2 port | FEC Validation 4x400GE | 411-675.59 |
| 411-675.59 | Ethernet FEC Validation - up to 400GE - 1 port | | |



Contact Us **+1 844 GO VIAVI**
(+1 844 468 4284)

To reach the VIAVI office nearest you,
visit viasolutions.com/contact

© 2024 VIAVI Solutions Inc.
Product specifications and descriptions in this document are subject to change without notice.
Patented as described at
viasolutions.com/patents
onelabpro-ds-snt-nse-ae
30194060 900 0224